

MÄK Plan View Display

Interactive Real-time Tactical Map

Overview

Increase your awareness of the virtual battlefield with the MÄK Plan View Display (PVD). By overlaying HLA (1.3 or IEEE 1516) or DIS entities and information onto 2D views of tactical, strategic, and visual databases, you gain new insight into the virtual battle.

Standard map formats and an intuitive user interface allow you to easily answer questions about the placement of forces and how terrain might affect the engagement. The PVD displays line-of-sight information, terrain elevation profiles, track histories, threat rings, sensor coverage areas, communication links, and fire and detonate lines. With tactical overlays, you can add graphic objects such as lines, points, areas, symbols and text to the display to help you annotate and analyze a simulation. With a minimap, GUI controls, and keyboard shortcuts, you can quickly navigate to the portion of the terrain database you want to view.

Customization

The PVD comes with MILSTD 2525B icons, as well as more realistic-looking animated vehicle icons. You can also use your own custom entity or aggregate symbols. The PVD's display is adaptable, giving you the flexibility to enable only the features you need. With an available C++ toolkit*, you can customize the PVD or embed it in other applications. The PVD is the perfect foundation for a custom situation awareness display. And with the MÄK Stealth and the MÄK Data Logger applications, it is a key component of an after action review system or instructor operator station.

Terrain Formats

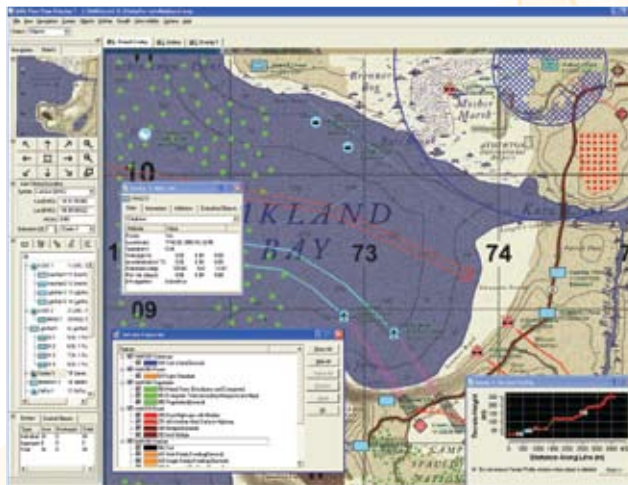
3D Terrain — OpenFlight®/MetaFlight®, DTED, CTDB, ESRI shapefiles

Raster maps — GeoTIFF, CADRG, .bmp, .png, .jpeg, etc.

Vector data — DFAD, VMAP, ESRI® shapefiles, .dfd

Supported Platforms

- Windows® XP/2000/
Vista
- Linux®



* Requires Qt® and VR-Link® Developer's Licenses

© 2007 MÄK Technologies, Inc. All Rights Reserved. MÄK Technologies and VR-Link are trademarks or registered trademarks of MÄK Technologies. OpenFlight is a registered trademark of Presagis. ESRI is a registered trademark of ESRI. Windows is a registered trademark of Microsoft Corporation. Linux is a registered trademark of Linus Torvalds. Qt is a registered trademark of Trolltech ASA. All product features and functions are subject to change without notice.

Visualize



- PROVIDES MULTIPLE MAP VIEWS
- IMPORTS POLYGONAL DATABASES, RASTER MAPS, AND VECTOR DATA
- KEY COMPONENT OF AAR SYSTEM OR IOS
- GUI-BASED TERRAIN MANAGEMENT TOOL
- INTERACTIVE CONTROL OF MÄK STEALTH
- TACTICAL OVERLAYS
- CALCULATES LINE-OF-SIGHT
- TOOLKIT API FOR USER CUSTOMIZATION*
- DISPLAYS CONTOUR AND GRID LINES
- ENTITY, AGGREGATE, AND SENSOR DISPLAY
- HLA AND DIS COMPLIANT



Link — Simulate — Visualize